

Bushnell

YARDAGE **PRO XG** 



User Manual

Model # 368200

Lit # 98-1366/1-09

Section 1: Introduction.....	2
Welcome	2
Important Information	3
http://www.bushnellgolf.com/gps/gps_rangefinders.cfm	4
Package Contents	5
Additional Requirements	5
Bushnell Yardage Pro XG Features	6
Battery Installation	7
Keypad Function	8
Start-Up	8
Section 2: Bushnell Yardage Pro XG.....	9
Main Menu	9
Play	10
Map	14
Settings	16
Section 3: Bushnell Yardage Pro Sync.....	18
Introduction	18
Installation	19
Download Courses.....	20
Send Courses	21
Save Courses	22
Settings	23
Section 4: Limited Warranty.....	25

Welcome

Dear Valued Consumer:

Congratulations on your purchase of the Bushnell Yardage Pro XG. We sincerely hope you will find your Bushnell product both enjoyable and easy to use. Knowing the exact distance for each shot will assist you in lowering your score and enhance your overall golfing experience.

This User Manual was created for you to get the most out of your new device and assist with the initial setup. It only takes a few minutes to read, after which you can immediately begin using your new Yardage Pro XG and enjoying its many features.

Also, please visit http://www.bushnellgolf.com/gps/gps_rangefinders.cfm to explore the benefits of becoming an iGolf Member. As a member, you have access to all the features and benefits iGolf has to offer, including access to an extensive database of GPS enabled golf course files for use on your Yardage Pro XG.

Thank you for choosing Bushnell.

Important Information

Legal Disclaimer

By using this product, you agree that Bushnell Outdoor Products will not be held legally responsible for any injury or damage to you or any person or property caused by the user's improper operation and/or poor judgment while using this product.

Note: See Limited Warranty for other limitations to our liability.

Additional Information

The Global Positioning System (GPS), a network of 32 satellites orbiting Earth, is operated and maintained by the U.S. government. This GPS device requires at least 3 satellites to be acquired to accurately determine your position. Any change made to the system by the government could affect the accuracy and performance of this product.

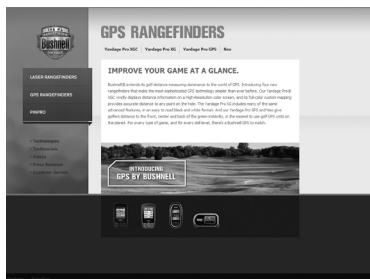
http://www.bushnellgolf.com/gps/gps_rangefinders.cfm

Bushnell Golf GPS Website

http://www.bushnellgolf.com/gps/gps_rangefinders.cfm is an online resource for all our Golf GPS product owners, and it also serves as a portal to access iGolf.com GPS course files to use with these Bushnell products. Setting up your iGolf.com membership allows you access to GPS course files, the ability to download GPS files and many other benefits.

Download Course Files

- 1) Go to http://www.bushnellgolf.com/gps/yardage_xg.cfm, and click the “Log-In” link. If not already an iGolf member, fill in the boxes and click “Join Now”.
- 2) Search for desired course using simple terms to broaden results (i.e. Augusta National Golf Club: search for *Augusta*).
- 3) Select course name from search results and download GPS file.
- 4) When prompted, SAVE the file.
- 5) Use Bushnell Yardage Pro Sync to transfer golf course file to device.



Package Contents – Additional Requirements

Package Contents

- 1 - Bushnell Yardage Pro XG
- 1 - USB Sync Cable
- 1 - AC/DC 5V Adapter
- 1 - Belt Clip
- 1 - Storage Pouch
- 1 - Software CD
- 1 - User Manual
- 1 - Quick Start Guide

Additional Requirements*

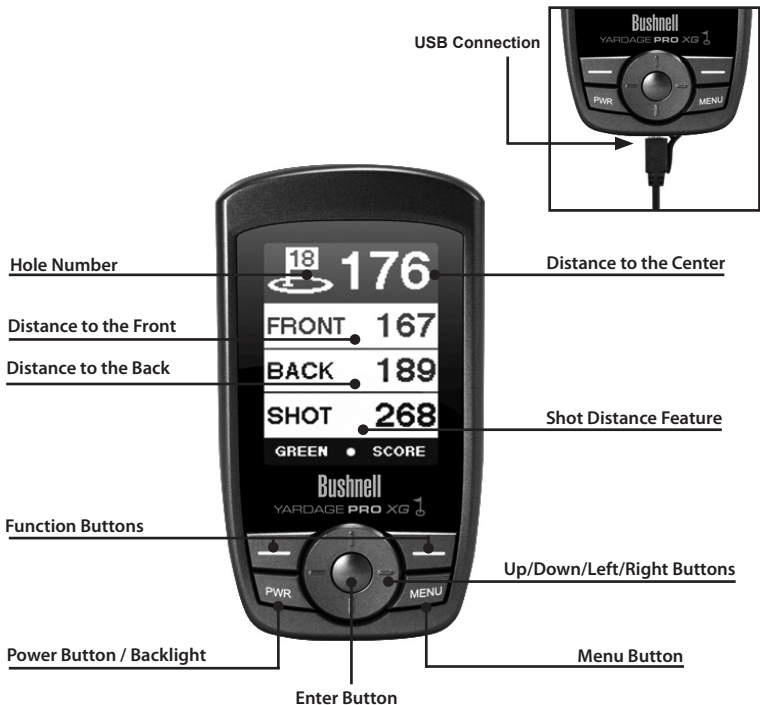
- PC with Windows Vista/XP/2000 or Mac OSX
- PC with CD-ROM
- PC with USB port

** Required to transfer files from computer*

Windows is a registered trademark of Microsoft Corporation in the United States and other countries.

Mac and Mac OS are trademarks of Apple Inc., registered in the U.S. and other countries.

Bushnell Yardage Pro XG Features



Battery Information

Battery Information

This product contains an internal rechargeable lithium-ion battery. Under normal operating conditions, a new battery will last 14 -16 hours on a full charge. However, battery life is diminished due to a variety of factors including temperature and backlight usage. All rechargeable batteries lose their effective charge length over time.

The internal battery can be charged by connecting the included USB cable to the device and a computer. Alternatively, the battery can be charged by connecting the USB cable to the device and using the included adapter to plug the charger into a standard 110V wall outlet.

WARNING

- Keep battery cover closed at all times. Risk of explosion if battery is replaced with incorrect type.
- Do not attempt to open, disassemble or service the battery. Battery must be replaced by qualified technician.
- Do not crush, puncture or short external contacts. Do not expose to temperatures above 140° F (60° C).
- Properly recycle or dispose of battery. Do not dispose in fire or water.

Keypad Function – Start-up

Keypad Function

Power Button

- Turns the device on and off
- Turns the backlight on and off

Menu Button

- Launches Play Menu

Right/Left Function Buttons

- Switches between screens

Right/Left Toggle Buttons

- Moves between fields
- Changes hole number (+/-)

Up/Down Toggle Buttons

- Scrolls up/down
- Switches between screens

Enter Button

- Selects highlighted option
- Activates Shot Distance



Start-Up

Power On

- Press and hold power button until the welcome screen appears (about 2 seconds).
The welcome screen will display the name and phone number you specify in Settings.

Power Off

- Press and hold power button until the screen goes blank.

Backlight On/Off

- From any screen, press power button to turn backlight on.
- Press power button again to turn backlight off.

Main Menu

The Main Menu displays all the features available to the user, which are explained in detail in subsequent sections of this User Manual. To begin using the device, scroll to highlight any feature and press the Enter button.



Feature Descriptions

- Play Select to play golf using GPS data
- Map Select to create and customize golf course files
- Settings Select to customize additional features

Play Golf

Play Golf

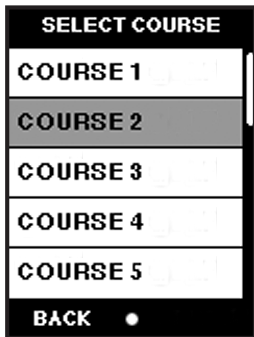
This feature is the main interface to display scorecard and distance information. Course information must be first downloaded from your iGolf account or manually entered using the Map feature. If GPS data is available, distances to the front, center and back of the green and up to six custom points per hole will be displayed upon satellite acquisition, as well as a map of the green for each hole. The user is also able to enter the score and putts for each hole.

1. Select Course

Highlight "Play" on the Main Menu and press Enter. If a satellite fix is available, the golf course closest to current location (within 1,000 yards) will automatically be highlighted. If a satellite fix is not available, scroll to highlight the correct golf course. Once the desired course is highlighted, press Enter.

2. Select Tee Box

Highlight the desired tee box and press Enter. Only the tee boxes available in the data file will be displayed.




Screen Operation

Right/Left toggle	Move between holes
Up/Down toggle.....	Move between screens
Enter	Activate Shot Distance
Menu	Go to Play Menu
Function	Green/Score

Shot Distance Operation

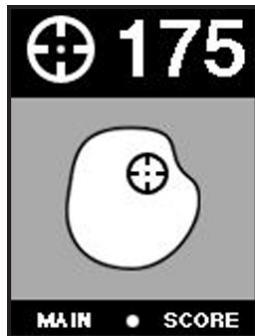
1. From the main Play screen, press Enter to activate the Shot Distance feature.
2. Distance from the start position will automatically update as the user moves.
3. Once the user reaches the end position, press Enter to freeze the shot distance measurement.
4. Press Enter again to reactivate the Shot Distance feature and establish a new start position.

	176
FRONT	167
BACK	189
SHOT	268
GREEN	SCORE

Play Golf

Green

This feature displays a map of the green for the current hole. Using the Up/Down/Left/Right buttons, the user is able to move the crosshair target to any point on the green map. The distance to this point is displayed at the top of the screen.



Score

This feature allows the user to input the score and putts for each hole played. The hole number and par are also displayed on this screen for reference. Use the Right/Left buttons to select the correct number for score and putts, and use the Up/Down buttons to move between score and putts fields. This information will be used on the Score Summary screen, which is found in the Play Menu.

Play Menu

From any Play screen, press Menu to access the Play Menu. This menu allows the user to easily view status or modify settings being used for the current course.

1. Summary

Allows the user to see statistics for the current game being played.

2. Map Hole

Allows the user to map the current hole being played without having to exit the game.

3. Battery

Displays a horizontal bar representing the power remaining in the battery.

4. Satellites

Displays various circles to show current satellites being tracked and GPS signal strength.

5. Tee Box

Allows the user to change the current tee box selection.

6. Yard or Meter

Allows user to select unit of measurement displayed.

7. Exit

Returns to Main Menu.



Map Course

Map Course

This feature is used to manually input course name and map GPS data points. Existing course files may be customized or new files created using the device. Highlight “Map” on the Main Menu and press Enter.

1. Select Course

Scroll to highlight the desired new or existing golf course and press Enter.

2. Course Name

To revise name, highlight “Course Name” and press Enter. Names should be distinguishable from other golf courses entered. Scroll to highlight the character and press Enter. To delete characters, scroll to “BKSPC” and press Enter. When finished, press SAVE.

3. Course Data

Highlight “Course Data” and press Enter. Highlight desired tee box and press Enter. Select the desired hole and press Enter. Input par and handicap information, using the toggle button to select values and move between options. When finished, press Save. Repeat these instructions for all desired holes and tee boxes for the course and press Save to exit.

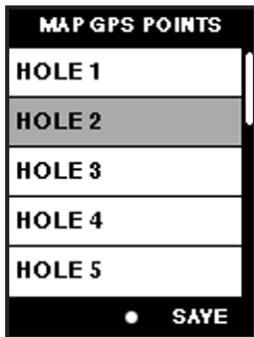
MAPPING MENU	
COURSE NAME	
COURSE DATA	
MAP GPS POINTS	
	● SAVE

Map Course (continued)

4. Map GPS Points

To add or revise GPS data, highlight “Map GPS Points” and press Enter. Select the desired hole and press Enter. Highlight point to map* and press Enter. Stand at desired location, confirm satellite strength and press Next to register point. Do not move until process is complete. Repeat these instructions for all desired points. When finished, press Save. Repeat for all holes.

**If mapping a Custom Point, the user may customize the name prior to registering GPS data. The user may select from a list of common abbreviations, or choose a six (6) character name, to easily identify the point on the course. If the user chooses not to customize the name, proceed directly to “Register”.*



Settings

Settings

This feature provides various configuration settings to personalize the device, such as screen contrast, distance measurement and GPS performance. Highlight “Settings” on the Main Menu and press Enter.

1. Battery Level

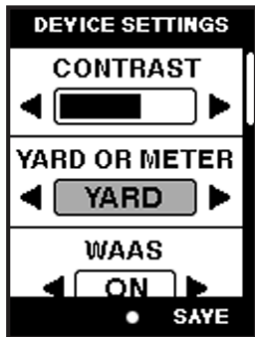
This feature displays the status of the battery in the device. Battery information is displayed using a horizontal bar representing the amount of power remaining in the battery.

2. Satellites

This feature displays the GPS satellites recognized by the device. Satellites providing location data to the device for use in distance calculation are represented by black squares. At least three satellites providing location data are required before GPS distance can be calculated.

3. Device Settings

- Screen contrast Adjust to aid viewing in various light conditions
- Yard or Meter Select yards or meters as the measure of distance
- WAAS Select if location correction is used to improve GPS accuracy. Commonly known as WAAS, this system of satellites and ground stations provides GPS signal corrections for much of the U.S.
- Stabilizer Allows the user to select the rate at which the device refreshes GPS position. With “Stabilizer On” (default setting) the device will not refresh GPS distance readings once movement has ceased. This is useful to users who experience fluctuating distance readings, even though they are stationary.



Introduction

Introduction

Yardage Pro Sync provides the user with all the tools required to enable communication between the device and Windows Vista, Windows XP, Windows 2000 or Mac OS X computer. Using this interface, the user can control every aspect of golf course file management. From accessing the iGolf.com database to syncing course files, Yardage Pro Sync encompasses many functions which enhance the GPS experience.

Software Features

- Search Search for golf courses on iGolf.com to download
- My Courses Course files saved on computer ready to send to device
- My Device Course files on device ready to save to computer
- Settings Change COM Port and modify course file locations
- Web Browser Direct access to features available on Bushnellgolf.com

Windows is a registered trademark of Microsoft Corporation.

Mac OS X is a trademark of Apple, Inc.

Installation

Follow these instructions to assist in the proper and complete installation of the Yardage Pro Sync application software on your computer. Confirm the XG is NOT connected with the USB cable to the computer before beginning the installation.

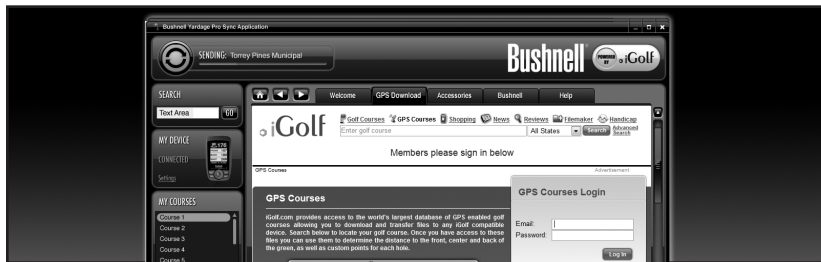
To install Yardage Pro Sync on a Windows Vista, Windows XP, Windows 2000 or Mac OS X computer:

1. Insert CD included with the product into computer.
2. Open appropriate CD drive to view contents.
3. Select "Bushnell Yardage Pro Sync Installer" to launch program.
4. Select "USB Driver Setup" to install required drivers.
5. Select "Sync Application" to install sync software.
6. Launch software from "Bushnell Yardage Pro Sync" icon on desktop.

Note: If you experience any problem with the installer (make sure you try restarting your computer first), click the "Product Support" link at http://www.bushnellgolf.com/gps/yardage_xg_support.cfm, and download and install the latest version of the Yardage Pro Sync application.

**Windows is a registered trademark of Microsoft Corporation in the United States and other countries. Mac and Mac OS are trademarks of Apple Inc., registered in the U.S. and other countries.*

Download Courses



Download Courses

This feature provides direct access to iGolf.com where users may search for golf courses and members may download files. Select "Member Login" to access your account (if not yet an iGolf.com member, use the "Join Now" link to enroll). Click the "GPS Download" tab at the top of the screen. For further assistance, please note:

1. If search returns more than one page of results, use Advanced Search to narrow results.
2. All GPS files contain scorecard information.
3. Once downloaded, the course file will appear in the "My Courses" section of the sync application.

Send Courses

**Send Courses**

This feature allows the user to transfer golf course files from a computer to the device. Select course files from the "My Courses" section of the sync application and press the "Send" button to transfer the courses to the device. For further assistance, please note:

1. Before you can transfer the course files, the device must be powered on and connected (with the USB cable) to the computer. The device will then display "USB Mode".
2. Multiple courses can be selected and transferred at one time (by holding down the Ctrl key on your PC as you click on the names of the courses).

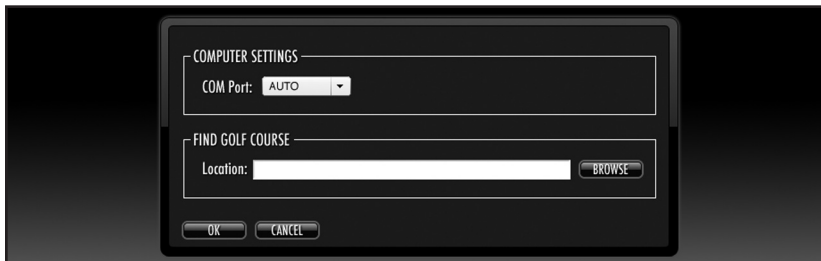
Save Courses



Save Courses

This feature allows the user to transfer golf course files from the device to a computer. Select the course files from the "My Device" section of the sync application and use the mouse to drag the courses into the "My Courses" section of the sync application. For further assistance, please note:

1. Before you can transfer the course files, the device must be powered on and connected (with the USB cable) to the computer. The device will then display "USB Mode".
2. Multiple course files can be saved at one time (by holding down the Ctrl key on your PC as you click on the names of the courses).



Settings

This feature allows the user to specify how the device communicates with a computer and where course files are stored. Select “Settings” from the “My Device” section. For further assistance, please note:

1. Always set COM to “AUTO” unless specific port being used is known (does not apply to Mac users).
2. Default course file storage location is C:\My Documents\Bushnell\YardagePro XG. If the setting must be changed, note new location and save GPS course data downloads in the same folder.

FCC Compliance Statement

This device complies with Part 15 of the FCC interference limits for Class B digital devices FOR HOME OR OFFICE USE. These limits are designed to provide reasonable protection against harmful interference in a residential installation, and are more stringent than "outdoor" requirements.


Operation of this device is subject to the following conditions; (1) This device may not cause harmful interference, and (2) this device must accept any interference received, including interference that may cause undesired operation.

This equipment generates, uses and can radiate radio frequency energy and, if not installed and used in accordance with the instructions, may cause harmful interference to radio communications. However, there is no guarantee that interference will not occur in a particular installation. If this equipment does cause harmful interference to radio or television reception, which can be determined by turning the equipment off and on, the user is encouraged to try to correct the interference by one or more of the following measures:

- Reorient or relocate the receiving antenna.
- Increase the separation between the equipment and receiver.
- Connect the equipment into an outlet on a circuit different from that to which the receiver is connected.
- Consult the dealer or an experienced radio/TV technician for help.

The device does not contain any user-serviceable parts. Repairs should only be made by an Authorized Bushnell repair center. Unauthorized repairs or modifications could result in permanent damage to the equipment, and will void your warranty and your authority to operate this device under Part 15 regulations.

The shielded interface cable which is provided must be used with the equipment in order to comply with the limits for a digital device pursuant to Subpart B of Part 15 of FCC Rules.

	<p>FR Participans à la protection de l'environnement !</p> <p>Ⓢ Votre appareil contient des matériaux dangereux et/ou polluants.</p> <p>Ⓢ Confiez celui-ci dans un point de collecte ou à défaut dans un centre service agréé pour que ces matériaux soit éliminés.</p>
	<p>EN Environment protection first !</p> <p>Ⓢ Your appliance contains hazardous materials which can be recovered or recycled.</p> <p>Ⓢ Please do not put it in your bin, even collection point.</p>
	<p>DE Schützen Sie die Umwelt!</p> <p>Ⓢ Ihr Gerät enthält mehrere umweltschädliche, wiederverwertbare Werkstoffe.</p> <p>Ⓢ Bitte stellen Sie Ihr Gerät zum Entsorgen nicht in Ihren Hausmüll, sondern bringen Sie es zu einer geeigneten Entsorgungsstelle für Elektrogeräte (DEW/tes/BUZ).</p>
	<p>FR Participans à la protection de l'environnement !</p> <p>Ⓢ Votre appareil contient des matériaux dangereux et/ou polluants.</p> <p>Ⓢ Confiez celui-ci dans un point de collecte ou à défaut dans un centre service agréé pour que ces matériaux soit éliminés.</p>
	<p>DE Schützen Sie die Umwelt!</p> <p>Ⓢ Ihr Gerät enthält mehrere umweltschädliche Materialien.</p> <p>Ⓢ Bitte stellen Sie Ihr Gerät zum Entsorgen nicht in Ihren Hausmüll, sondern bringen Sie es zu einer geeigneten Entsorgungsstelle für Elektrogeräte (DEW/tes/BUZ).</p>
	<p>EN Vi skal alle være med til at beskytte miljøet!</p> <p>Ⓢ Apparatet indeholder farlige materialer, der kan genbruges eller genvandes.</p> <p>Ⓢ Bring det til et uautoriseret indsamlingssted (se håndbog eller et autoriseret servicecenter) for at disse dele skal fjernes ordentligt.</p>
	<p>ES ¡ Participa en la conservación del medio ambiente ! !</p> <p>Ⓢ Este dispositivo contiene materiales recuperables y/o tóxicos.</p> <p>Ⓢ Entregue el fund de este dispositivo en un Centro de Recogida Autorizada o en uno de sus puntos de recogida. No lo ponga en el contenedor de residuos de hogar.</p>
	<p>FI Huolehtikaa ympäristöstä!</p> <p>Ⓢ Laiteesi on sisältänyt vaarallisia aineita ja korjattavissa materiaaleissa.</p> <p>Ⓢ Tuota laiteesi kierrätyskeskukseen tai soveliaan paikalliseen vaikkapa valtuutettuun huoltoasemaan, jotta laiteesi ei päätyisi kotikierrätykseen.</p>
	<p>GR Αν επιβλέψουμε να απαix ημας στην περιβάλλοντα ην επιβλέπουμε!</p> <p>Ⓢ Το προϊόν σου περιέχει επικίνδυνα υλικά και υλικά που απαιτούν επανακύκλωση.</p> <p>Ⓢ Πρέπει να το πας σε κάποιο σημείο, σε ένα κέντρο διαχείρισης απόβλητων ή σε ένα σημείο που έχει ορίσει ο δήμος σου.</p>
	<p>PH Protexión sa medio ambiente en primerio lugar!</p> <p>Ⓢ Siu aparato inclui materiales peligrosos, que pueden ser reciclados ou recuperados.</p> <p>Ⓢ Devese en un punto de coleta de residuos local.</p>



Specifications and designs are subject to change without any notice or obligation on the part of the manufacturer.

ONE YEAR LIMITED WARRANTY

Your Bushnell® product is warranted to be free of defects in materials and workmanship for one year after the date of purchase. In the event of a defect under this warranty, we will, at our option, repair or replace the product, provided that you return the product postage prepaid. This warranty does not cover damages caused by misuse, improper handling, installation, or maintenance provided by someone other than a Bushnell Authorized Service Department.

Any return made under this warranty must be accompanied by the items listed below:

- 1) A check/money order in the amount of \$10.00 to cover the cost of postage and handling
- 2) Name and address for product return
- 3) An explanation of the defect
- 4) Proof of Date Purchased
- 5) Product should be well packed in a sturdy outside shipping carton, to prevent damage in transit, with return postage prepaid to the address listed below:

IN U.S.A. Send To:

Bushnell Outdoor Products
Attn.: Repairs
8500 Marshall Drive
Lenexa, Kansas 66214

IN CANADA Send To:

Bushnell Outdoor Products
Attn.: Repairs
25A East Pearce Street, Unit 1
Richmond Hill, Ontario L4B 2M9

For products purchased outside the United States or Canada please contact your local dealer for applicable warranty information. In Europe you may also contact Bushnell at:

Bushnell Germany GmbH
European Service Centre
Mathias-Brüggen-Str. 80
D-50827 Köln
GERMANY
Tel: +49 221 995568-0
Fax: +49 221 995568-20

This warranty gives you specific legal rights.
You may have other rights which vary from country to country.

©2009 Bushnell Outdoor Products



Bushnell®
OUTDOOR
TECHNOLOGY

INNOVATION THAT THRIVES OUTSIDE

Customer Service: (800) 423-3537

www.bushnell.com

©2009 Bushnell Outdoor Products